

EMV400 FHD

4 Channels 1080p Full HD Mobile DVR

Quick Installation Guide



Copyright © EverFocus Electronics Corp.
Release Date: May, 2018

All the images including product pictures or screen shots in this document are for example only. The images may vary depending on the product and software version. Information contained in this document is subject to change without notice.

1. Introduction

The latest EverFocus digital video recorder generation is based on H.264 compression technology, resulting in enhanced recording capacity and improved network image transmission speed with high image quality. The 1080p full HD mobile DVR EMV400 FHD can support 4 channels analog SD/HD cameras, delivering and recording up to 1080p full HD resolution.

Its comprehensive features along with the embedded 3-axis g-sensor function enable the almost universal application of this full HD mobile DVR series. It supports various interfaces such as three USB ports / RS-485 / RS-232 / Panic Button / CAN bus / GPS, 3G, 4G and Wi-Fi Antenna. The design of RCA video/audio outputs at front panel makes your installation easy. You can install one 2.5" hard disk in the HD mobile DVR. You can also install one SD Card for alarm event backup recording. The User Interface has been specially designed to fit mobile small-sized monitor.

EMV400 FHD is equipped with anti-shock and anti-vibration housing. M12 connectors are also equipped. The power supply supports voltage regulator, and delay on/off. In addition, the Full HD mobile DVRs are SAE-J1455, EN50155, E-Mark, CE and FCC certified.

You can use EverFocus Mobile Applications, MobileFocus, to remotely view the camera streams from the HD mobile DVR through your handheld devices; or use EverFocus Xfleet system for remote fleet management. You can also use EverFocus EF-Reader to remotely back up recordings from the HDD/SD card of the mobile DVRs. The full HD mobile DVR is the ideal solution for your mobile surveillance needs.

Minimum System Requirements

Before installing, please check that your computer meets the following system requirements.

Operating System	Windows XP (32-bit) / Win7 (32 and 64-bit)
CPU	Intel Core I3-2100
RAM	2GB
VGA	Intel HD 2000
LAN Speed	10 / 100 / 1000 Mbps (RJ45)
Web Browser	IE11 and later, Firefox 50 and earlier, Chrome 44 and earlier, EF browser
Other Remote Application	1. EverFocus' Xfleet fleet management server system. 2. EverFocus' mobile app: MobileFocus (iOS / Android); MobileFocusHD (iPad).

Packing List

- HD Mobile DVR x 1
- HDD Tray (with two HDD lock keys and 8 screws packed inside the tray) x 1 (see 2.2 *Hard Disk Installation*)
- Mounting Bracket (you can use either bracket to mount the MDVR to the vehicle, please order either one you preferred before shipping. The two types of mounting bracket cannot be used simultaneously. See 2.1.1 *Mounting* for more details.
 - Z-Type Bracket x 2 (includes Long Screw with washers x 4; Short Screw with washers x 4)
Note: To meet the EN50155 standard, Z-Type Bracket is required.
 - Anti-Vibration Bracket x 1 (already installed on the mobile DVR)
Note: To meet the SAE-J1455 standard, Anti-Vibration Bracket is required.
- IR Remote Control (with two AAA batteries. See Note 3) x 1
- Power Harness Cable x 1
- Video Cable x1 (see 3.2 *Video Cable / Power-Out Cable*)
- Audio Cable x 1 (see 3.3 *Audio Cable*)
- D-Sub Cable x 1 (see 3.4 *D-Sub Cable*)
- Power-Out Cable x 1 (see 3.2 *Video Cable / Power-Out Cable*)
- Quick Installation Guide x 1

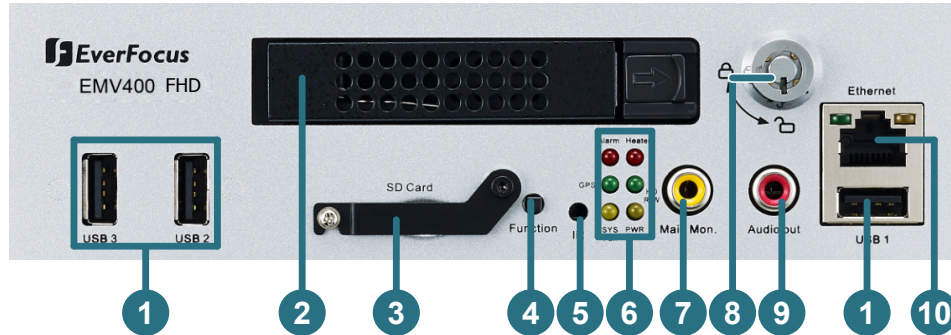
Note:

1. Equipment configurations and supplied accessories vary by country. Please consult your local EverFocus office or agents for more information. Please also keep the shipping carton for possible future use.
 2. Contact the shipper if any items appear to have been damaged in the shipping process.
 3. Risk of explosion if battery is replaced by an incorrect type. Dispose of used batteries according to the instructions.
 - a. Use only two AAA dry cell batteries.
 - b. Do not dispose of the batteries in a fire as it may explode.\
-

Optional Accessories

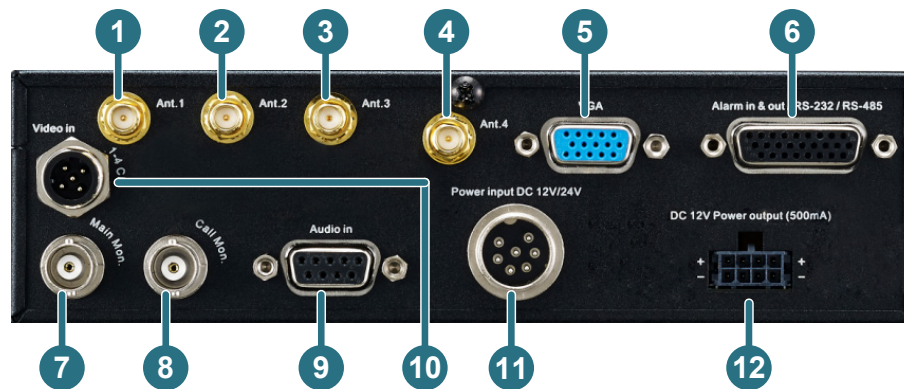
- 3G Antenna: For using 3G network function
- 4G Antenna: For using 4G LTE network function (LTE frequency bands differ among regions)
- GPS Antenna: For using GPS function
- Wi-Fi Antenna: For using Wi-Fi function

Front Panel



No.	Name	Description
1	USB2.0 Port	Three USB2.0 ports for connecting to the USB storage device or mouse.
2	HDD Drive Tray	Install a 2.5" HDD for recording.
3	SD Card Slot	Insert a SD / SDHC card (up to 32GB) for alarm event backup recording (see 2.3 <i>SD Card Installation</i>). To enable the SD card function, see 6.4.1 <i>Alarm</i> in the <i>User's Manual</i> . You can also see <i>Tested SD Cards</i> in 2.3 <i>SD Card Installation</i> for tested card brands.
4	Function Key	This Function key is currently reserved .
5	IR Receiver	Receives data from the infrared remote control.
6	System LEDs	<ul style="list-style-type: none"> • Alarm: Turns on when the connected alarm I/O is triggered; turns off when the alarm I/O stops being triggered. • GPS: Turns on continuously when the mobile DVR is receiving GPS data. • System Fail: Turns off when system is acting normally. Turns on when these events occur: System Clock Error / Fan Fail / Disk Temperature Over / Disk Fail / Disk Off / Network Loss. • Heater: Blinks when heater on; off blinking when heater off. • HD R/W: Blinks when the HDD is reading or writing. • Power: Turns on continuously when the power is supplied. Blinks when Battery power error occurs (lower than 9V or higher than 36V) or 12VDC power supply error.
7	Main Monitor	RCA video output for connecting to a monitor for live view, playback and displaying OSD. Note this mobile DVR has three Main Monitor outputs, one on the front panel and the other two on the rear panel. All of the Main Monitor ports can be connected simultaneously.
8	HDD Key Lock	Lock and unlock the HDD tray.
9	Audio Out	RCA audio output for connecting to the speakers. The audio output only works during playback. Speakers with a (built-in) amplifier and external power supply are required.
10	Ethernet Port	One RJ-45 port for connecting to the network.

Rear Panel



No.	Name	Description
1	Antenna 1 (3G/4G)	Connects to the 3G or 4G Antenna for using 3G/4G function.
2	Antenna 2 (4G)	Connects to the 4G Antenna for using 4G LTE function. Note that the 4G function is required to use both Antenna 1 and 2.
3	Antenna 3 (GPS)	Connects to the GPS Antenna for using GPS function.
4	Antenna 4 (Wi-Fi)	Connects to the Wi-Fi antenna for using Wi-Fi function.
5	Main Monitor (VGA)	VGA video output for connecting to the main monitor for live view, playback and displaying OSD.
6	D-Sub Connector	D-Sub connector for connecting to the Alarm I/O, RS-232 (CAN bus) or RS-485 devices (such as analog PTZ cameras). For details, please refer to <i>3.4 D-Sub Cable</i> .
7	Main Monitor (BNC)	BNC video output for connecting to the main monitor for live view, playback and displaying OSD. Note the mobile DVR has 3 Main Monitor outputs, one on the front panel and the other 2 on the rear panel. All of the Main Monitor ports can be connected simultaneously.
8	Call Monitor (BNC)	BNC video output for connecting to the call monitor for displaying the live view.
9	Audio Input	D-Sub connector for connecting to the supplied Audio Cable. For details, please refer to <i>3.3 Audio Cable</i> . Microphones with a (built-in) amplifier and external power supply are required.
10	Video Input	M12 connector for connecting to the supplied Video Cable. You can then connect analog HD / SD cameras to the Video Cable. * The mobile DVR doesn't support HD-TVI / HD-CVI / HD-SDI cameras.
11	DC Power Input	Power harness cable for connecting to 9 ~ 36VDC power source. For details, please refer to <i>3.1 Power Harness Cable</i> .
12	12VDC Power Outputs	A total of 12VDC, 5A power supply to the connected cameras. Please refer to <i>3.2 Video Cable / Power-Out Cable</i> .

2. Getting Started

2.1 Installation

Before installation, choose a location in the vehicle where it can:

- Provide convenient access for installing or removing the hard disk
- Allow air to flow around the fan vents. Inadequate or improper air flow can impede proper operation of the mobile DVR

Please **avoid** installing the mobile DVR to the following locations in the vehicle:

- That is subject to high vibration / sunlight levels
- That is subject to be drenched of the rain
- Where passengers can interfere with the mobile DVR
- Next to a heater duct

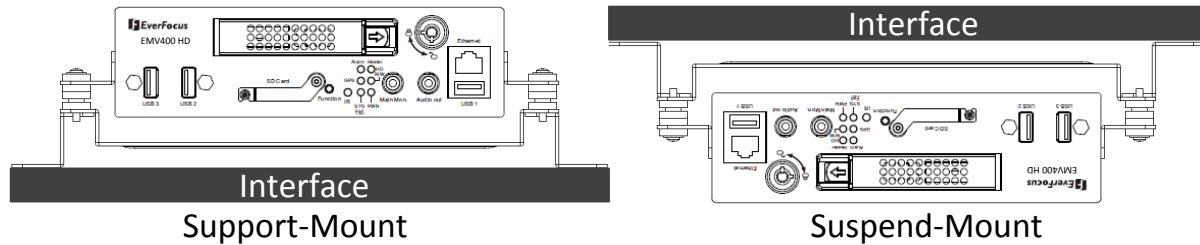
The following table lists the recommended location options in the vehicle:

Location	Convenient Operation	Easy to Install	Low Vibration	Good Air Flow
Bottom of glove box- horizontal mount	Yes	Yes	Yes	Yes
Bottom of passenger seat next to the driver	No	Yes	Yes	Yes
Underneath bulkhead-horizontal mount	Yes	Yes	No	Yes
Front of bulkhead-horizontal mount	Yes	Yes	Yes	Yes
Beside driver seat-horizontal mount	Yes	Yes	Yes	Yes

Note: Do not install the mobile DVR on the floor or on the transmission access hatch. These locations have the highest levels of vibration and may be subject to water damage.



2.1.1 Mounting

You can use the provided mounting bracket in the package to mount the mobile DVR inside the vehicle. Two mounting types are available, **Support-Mount** and **Suspend-Mount**.



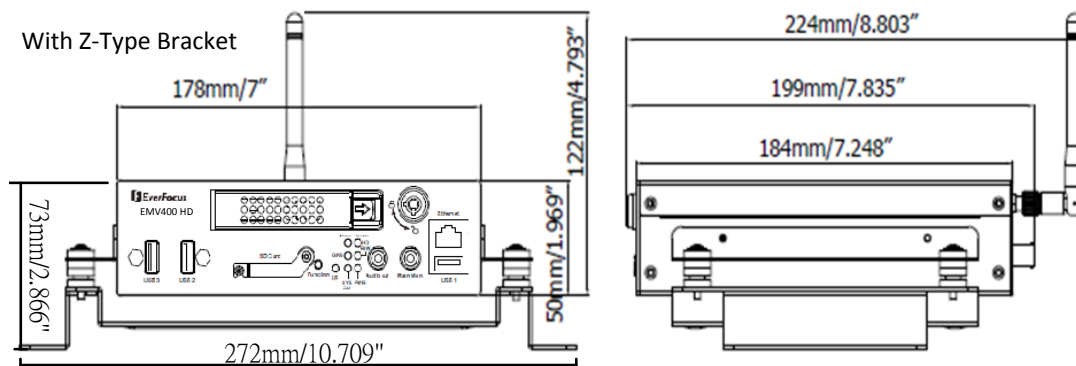
If the mounting bracket you ordered is a **Z-Type Bracket**, both of the above two mounting types are supported. Please note that to meet the EN50155 standard for the mobile DVR, the **Z-Type Bracket** is required to be used.

If the mounting bracket you ordered is an **Anti-Vibration Bracket**, only the **Support-Mount** is supported. Please note that to meet the SAE-J1455 standard for the mobile DVR, the **Anti-Vibration Bracket** is required to be used.

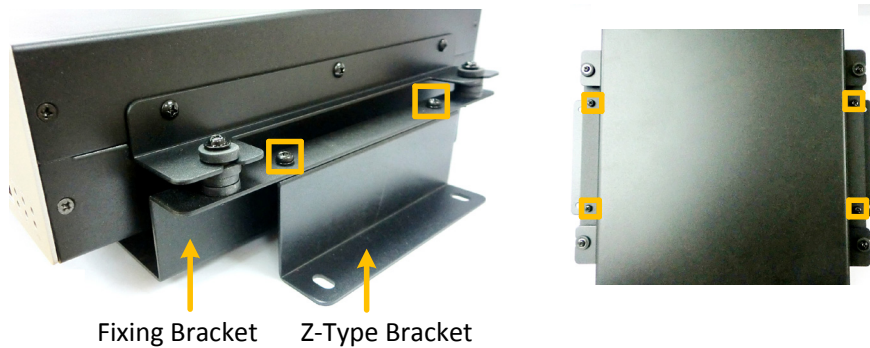
	Z-Type Bracket	Anti-Vibration Bracket
		
EN50155 Standard	Supported	-
SAE-J1455 Standard	-	Supported
Support-Mount	Supported	Supported
Suspend-Mount	Supported	-

Dimensions and Installation

- To install the mobile DVR onto a surface using **Z-Type Brackets**:



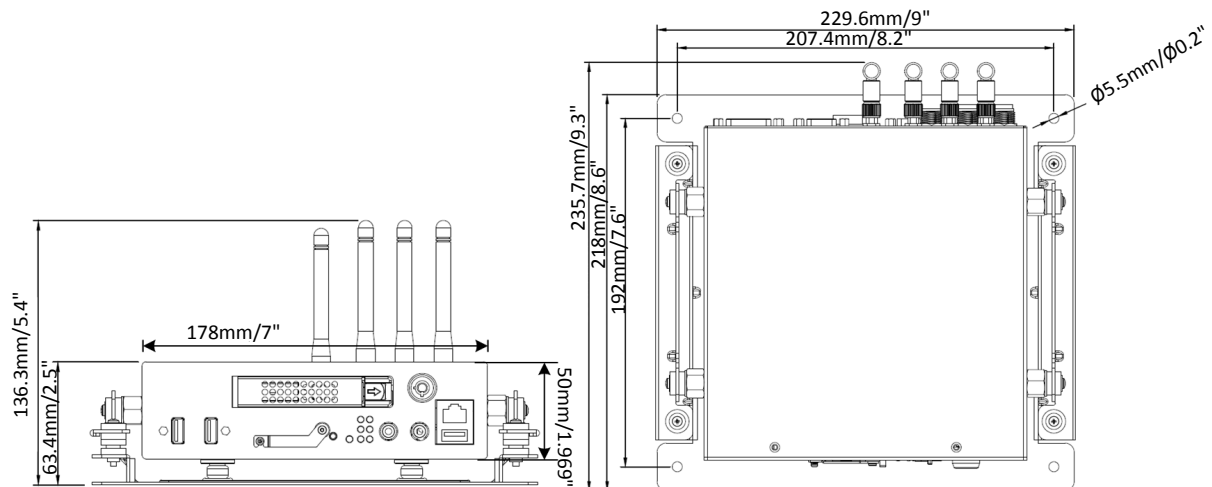
1. Attach the supplied two Z-Type Brackets to the **Fixing Bracket** on the mobile DVR. Use the supplied four **Short Screws with washers** to screw the **Z-Type Brackets** to the **Fixing Bracket**.



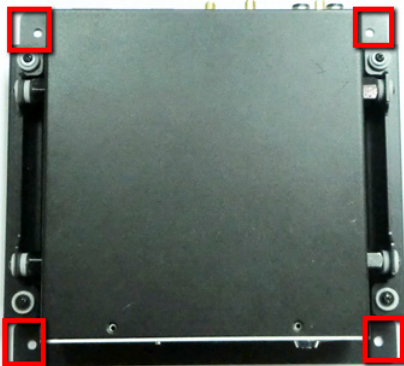
2. Screw the mobile DVR to the surface using the supplied four **Long Screws** with washers.



- To install the mobile DVR onto a surface using **Anti-Vibration Bracket**:



The **Anti-Vibration Bracket** is already installed on the mobile DVR. Users need to prepare four screws to screw the mobile DVR onto a surface. The screw diameter on the **Anti-Vibration Bracket** is $\varnothing 5.5\text{mm}$ / $\varnothing 0.2''$.



2.2 Hard Disk Installation

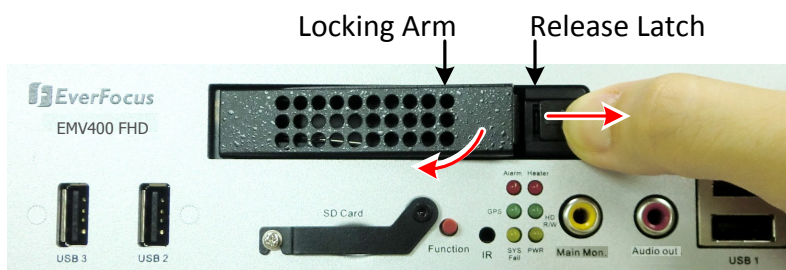
The mobile DVRs supply with a 2.5" HDD tray for inserting a Hard Disk for video recordings. Please follow the steps below to install the Hard Disk.

Note: The mobile DVR does not support hot swap for the hard disk. Ensure to power off the mobile DVR before removing the hard disk. Also ensure to remove the hard disk only after the power was completely shut off. This would protect and extend the operating life of the hard disk.

1. Make sure the mobile DVR is powered-off, and unlock the HDD Tray using the supplied key.



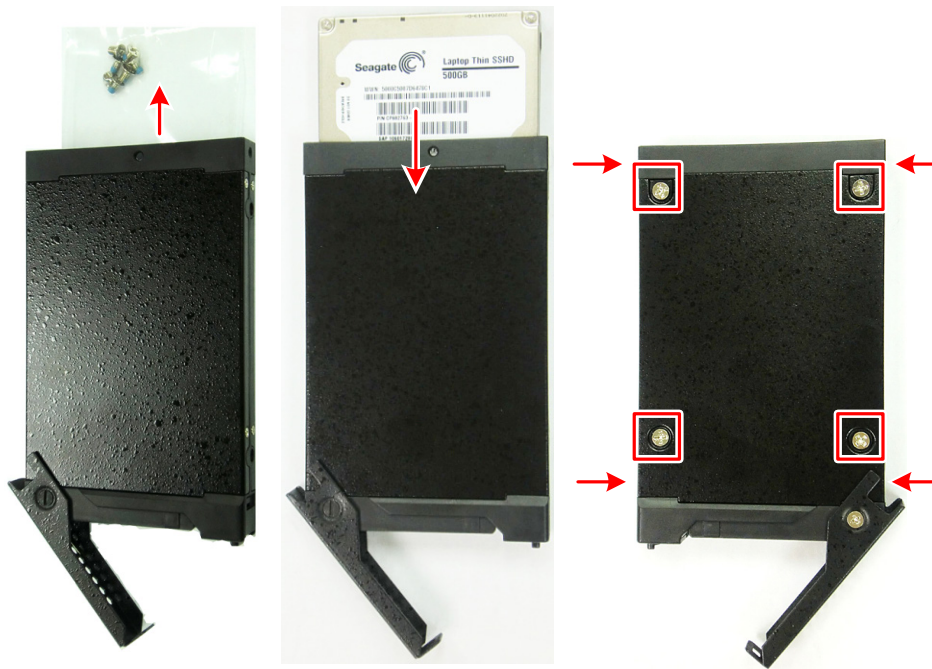
2. To install the HDD, press the **Release Latch** to the right, and the **Locking Arm** will pop up.



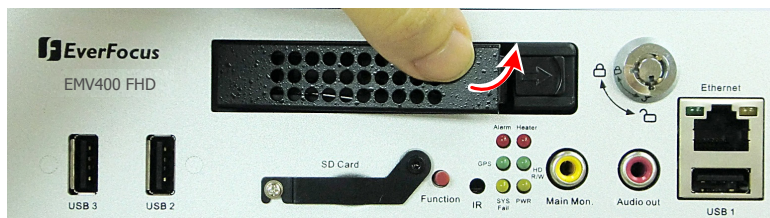
3. Gently pull out the **Locking Arm** to take out the **HDD tray**.



- Take out the supplied HDD screw pack inside the HDD Tray, insert a HDD in the HDD Tray and then screw the HDD to the tray with the supplied 8 screws.



- Insert the HDD Tray into the drive bay and close the **Locking Arm** until you hear a click.



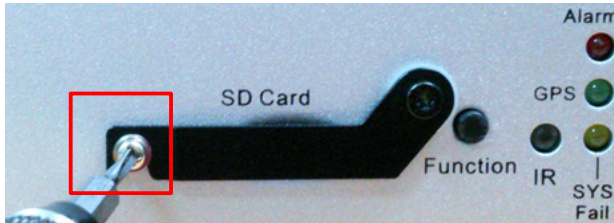
- Lock the HDD Tray before you power on the mobile DVR.



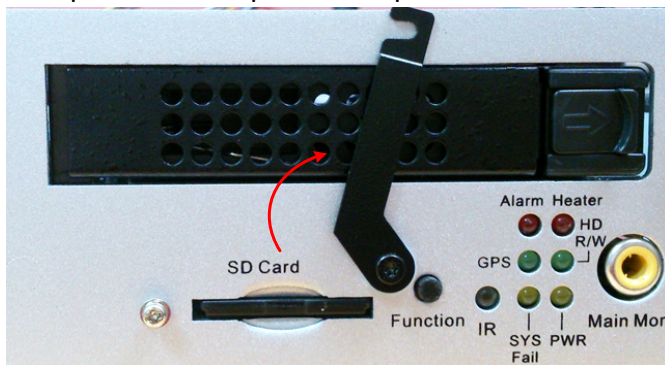
2.3 SD Card Installation

The mobile DVRs provide SD card function for Alarm event backup recording. Please follow the steps below to install the SD Card. Up to 32 GB SD / SDHC cards are supported.

1. On the front panel of the mobile DVR, unscrew the SD card protection plate.



2. Lift up the SD card protection plate and then insert a SD card.



3. Screw back the SD card protection plate. The SD card installation is now complete.

The Mobile DVR will automatically detect when a new SD card has been inserted and the below SD card format message will pop-up. Click **Yes** to format the SD card. The formatting process will take about 30 ~ 60 seconds. Note that only the formatted SD card can be used for alarm event backup recording function.

Tested SD Cards:

The mobile DVRs support SD / SDHC card up to 32 GB. The following brands of the SD cards have been tested by EverFocus and are recommended to work with EverFocus mobile DVRs.

Brand	SanDisk	SanDisk	Transcend	SanDisk	Toshiba	Kingston
Card Capacity	32 GB	32 GB	32 GB	16 GB	16 GB	16 GB
Card Rate Level	Class 10 U1	Class 2	Class 10 U1	Class 10 U1	U3	Class 10 U1

After installing the SD Card, it's recommended to enable the **Record Overwrite** function. The Record Overwrite function enables the mobile DVR to overwrite the recordings when the card space is full. If Record Overwrite is not enabled, the alarm event backup recording to the SD card will stop when card space is full. The mobile DVR will automatically pop-up a "SD Card Disk Full" message for notification. Users will have to replace a new SD card; or backup the SD card recordings and then erase (format) the recordings to resume the alarm event backup recording function.

To enable the Record Overwrite function, please go to the OSD menu: System < Record & Playback < Record.

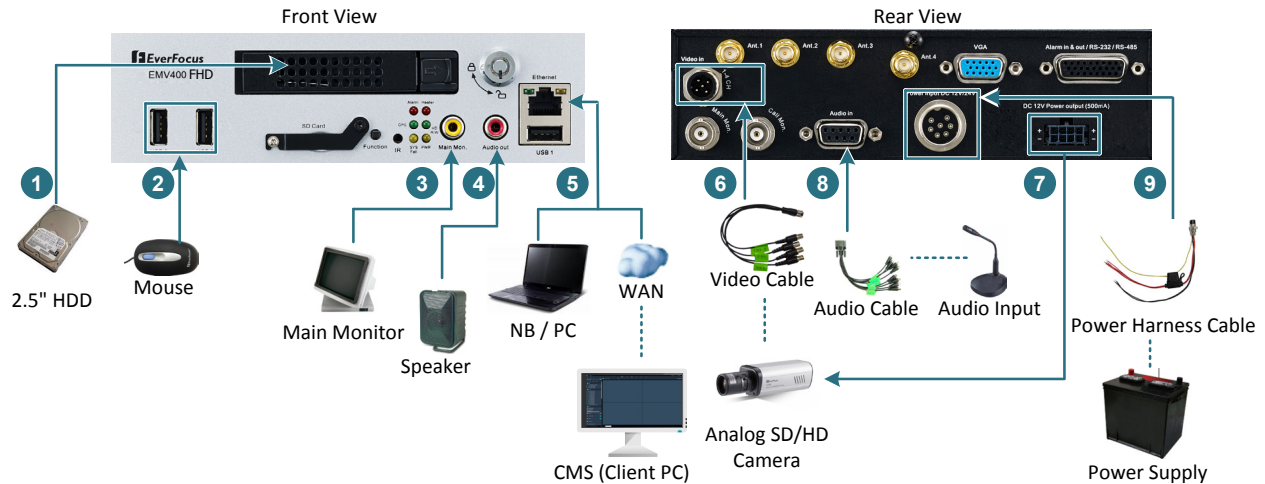


To remove the SD card, please go to the OSD menu: System < Disk < SD Card, and click the **Unmount SD** button. Then you can safely remove the SD card from the mobile DVR.



3. Basic Connection

After installing the mobile DVR in the vehicle, you can start connecting the mobile DVR to the external devices. The instructions below describe the basic connection to the mobile DVRs. For details on cable connections, please refer to the following sections.



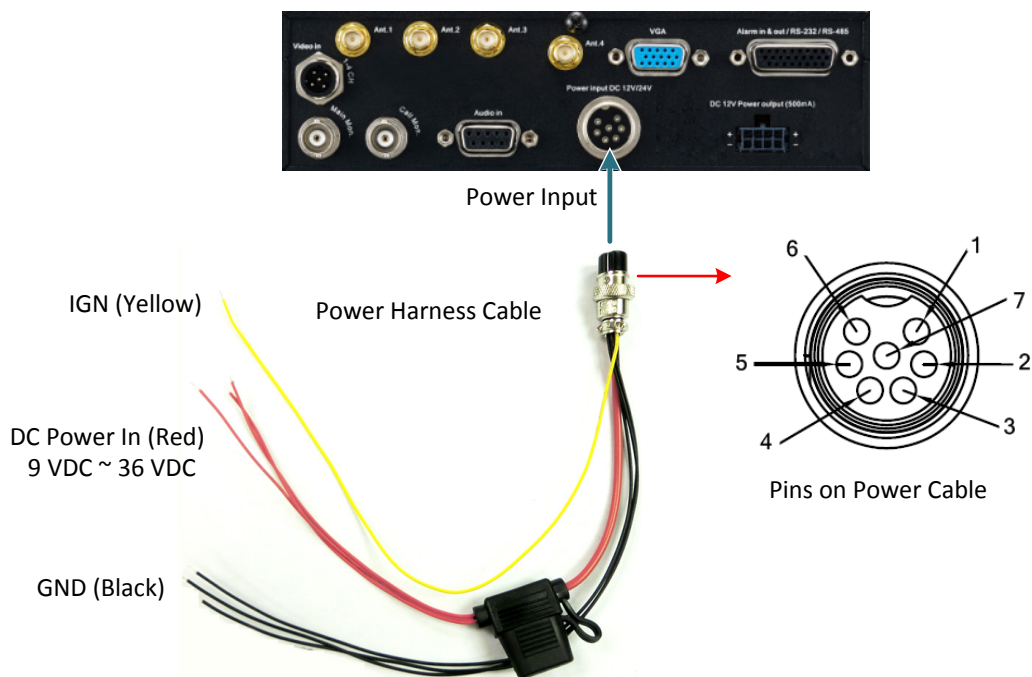
1. To record videos, insert a 2.5" HDD to the HDD tray. Remember to lock the HDD Key Lock after inserting the HDD or the recording will not start (see 2.2 *Hard Disk Installation*).
2. To control the system, connect a mouse to the mobile DVR or use the supplied IR Remote Control.
3. To view videos, connect a monitor to the RCA port using the RCA cable supplied by the monitor manufacturer. You can also connect other video out ports, please refer to 3.5 *Monitor Connection*.
4. To listen to audio of video source, connect a speaker to the Audio-out RCA socket. Note that the speaker with a (built-in) amplifier and external power is required.
5. To manage the mobile DVR over network, use a standard RJ-45 cable to connect the mobile DVR to the network.

Note: The mobile DVRs feature Wi-Fi/3G/4G function. You can optionally connect Wi-Fi/3G/4G module and antenna to the mobile DVR for networking.

6. Connect the cameras to the mobile DVR using the supplied Video Cable, please refer to 3.2 *Video Cable / Power-Out Cable*. (Note HD-TVI/HD-CVI/HD-SDI cameras are not supported.)
7. To power on the cameras, connect the power inputs of the cameras to the 12VDC power outputs of the mobile DVR using the supplied Power-Out Cable, please refer to 3.2 *Video Cable / Power-Out Cable*. Connect the audio input devices to the mobile DVR using the supplied Audio Cable, please refer to 3.3 *Audio Cable*.
8. Connect the supplied Power Harness Cable to the power supply in the vehicle for powering the mobile DVR. For details on vehicle connection, please refer to 4. *Vehicle Connection*.

3.1 Power Harness Cable

You can connect the mobile DVR to a power source between 9 VDC ~ 36 VDC.



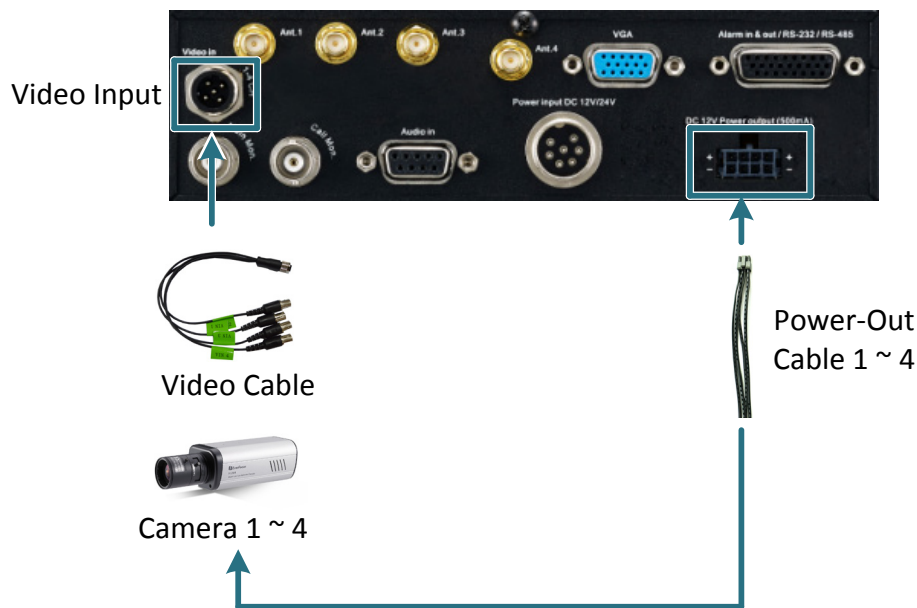
Pin Assignment

No.	Color	Description	No.	Color	Description
1	Red	DC Power Input	5	Black	GND
2	Red	DC Power Input	6	Black	GND
3	Red	DC Power Input	7	Yellow	IGN
4	Black	GND			

3.2 Video Cable / Power-Out Cable

The mobile DVRs have 1 Video In port for connecting 4 analog cameras using the supplied Video Cable. (Note HD-TVI/HD-CVI/HD-SDI cameras are not supported.)

The Video Cable is labeled with VIN 1~ VIN 4. Connect the cameras 1 ~ 4 to the video inputs 1 ~ 4.

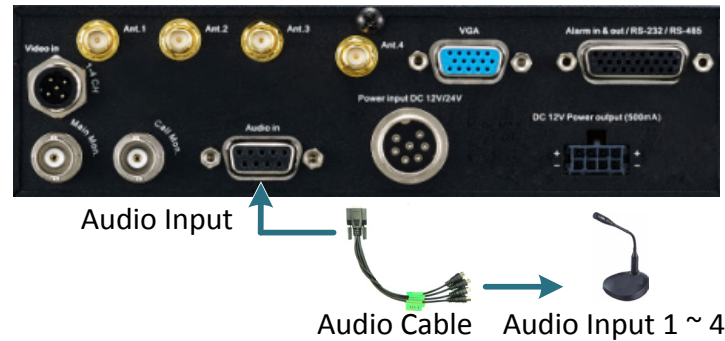


You can also use the supplied Power-Out Cable to power on the connected cameras. One Power-Out Cable provides four set of power output wires (+/-). A total of 12VDC, 5A power output is provided.



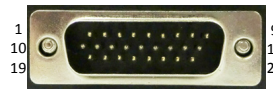
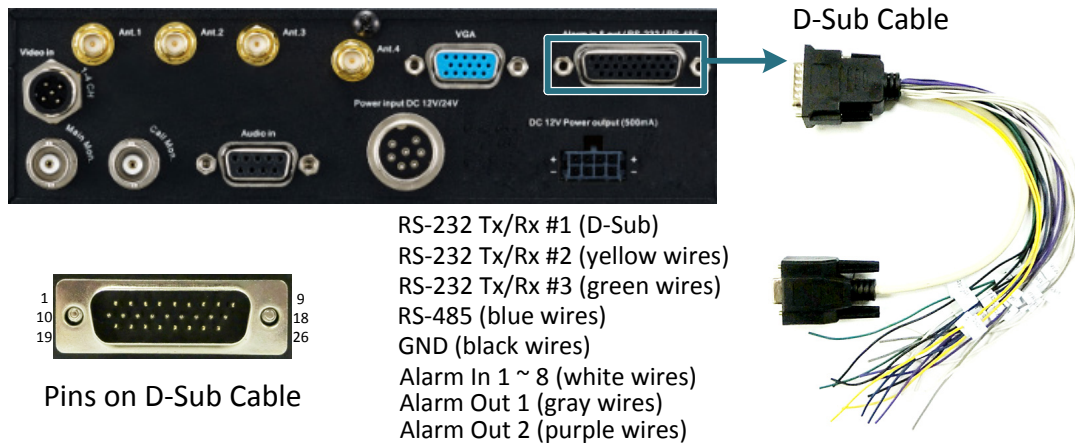
3.3 Audio Cable

The mobile DVRs have 1 Audio In port for connecting 4 microphones using the supplied Audio Cable. The Audio Cable is labeled with AIN 1~ AIN 4. Microphones with a (built-in) amplifier and external power supply are required.



3.4 D-Sub Cable

You can connect the mobile DVR to the Alarm I/O, RS-232 (CAN bus) or RS-485 devices using the supplied D-Sub Cable. The mobile DVR provides 4 alarm inputs / 2 alarm outputs / 3 RS-232 / 1 RS-485 connections.



Pins on D-Sub Cable

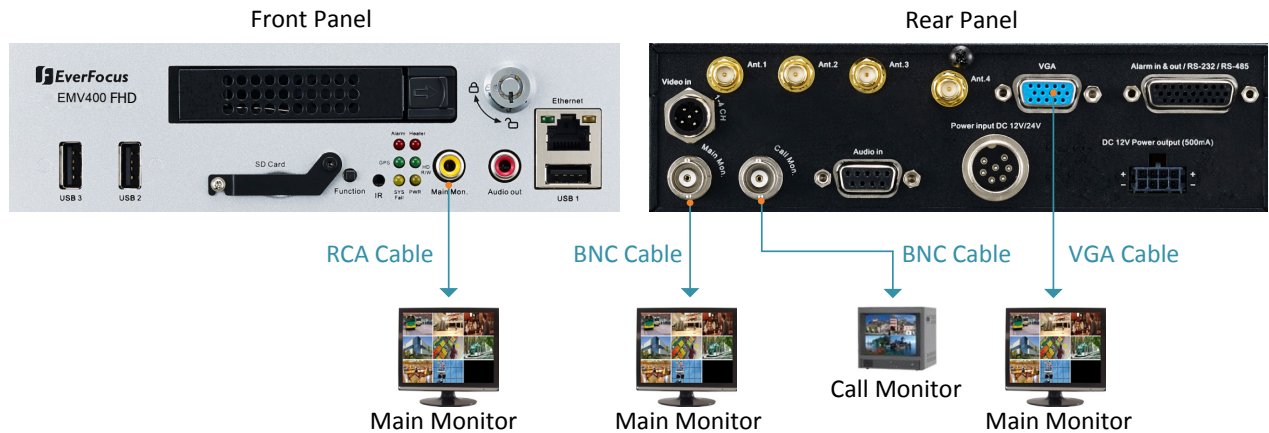
26 Pins on D-Sub Cable							
Pin	Pin Assignment		Pin	Pin Assignment		Pin	Pin Assignment
1	Alarm Output	N.O. 1	10	Alarm Input	Alarm in 1	18	GND
2		COM 1	11		Alarm in 2	19	RS-232 Tx #2
3		N.C. 1	12		Alarm in 3	20	RS-232 Rx #2
4		N.O. 2	13		Alarm in 4	21	GND
5		COM 2	14		Alarm in 5	22	RS-232 Tx #3
6		N.C. 2	15		Alarm in 6	23	RS-232 Rx #3
7	D-Sub	RS-232 Tx #1	16		Alarm in 7	24	GND
8		RS-232 Rx #1	17		Alarm in 8	25	RS-485
9		GND				26	RS-485

3.5 Monitor Connection

The mobile DVRs have 3 Main Monitor ports and 1 Call Monitor port. You can connect the monitors to the BNC, VGA or RCA Main Monitor and BNC Call Monitor ports of the mobile DVR. All of the Main and Call Monitor ports can be used simultaneously.

The configuration can only be operated on the Main Monitors, and the 3 Main Monitor outputs have the identical functionality.

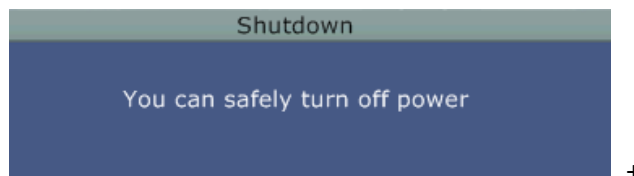
Make sure the connected monitor's specifications comply with these resolution requirements.



3.6 Turning On / Off the Power

Before powering on the mobile DVR, please make sure the internal HDD have been installed properly. Once you have completed the basic cable connections, you are ready to turn on the mobile DVR. Simply plug in the power source. The POWER LED will light up if power is normal. Once the system has finished loading, you can begin to set up the menu options for the mobile DVR.

To turn off the power, please go to OSD Root Menu > System Setting > Miscellaneous setting page, and click **Shutdown** (refer to 6.9.7 Miscellaneous in the *User's Manual*). After the message pops up as below, you can now turn off the power source.

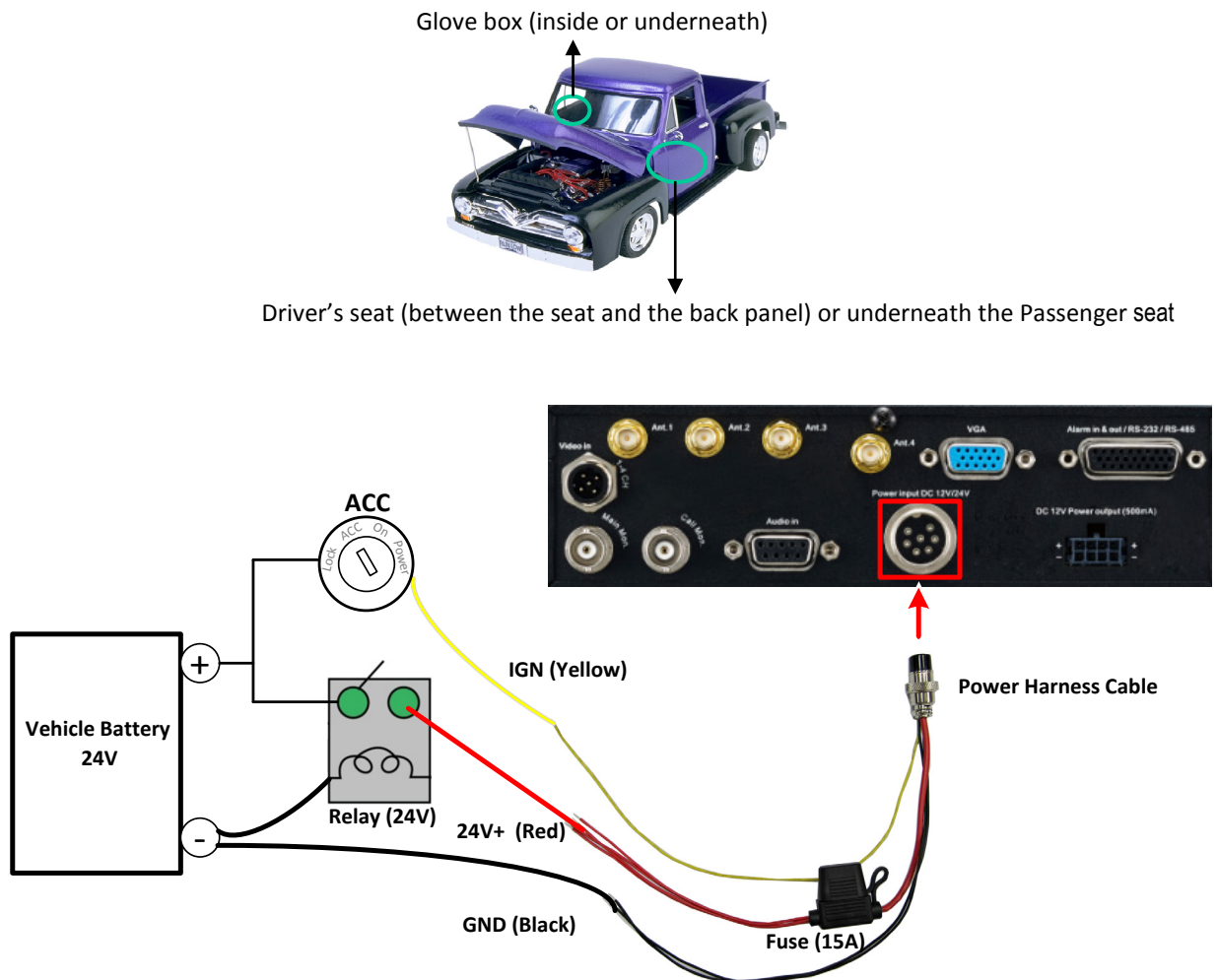


Note that when the mobile DVR is placed in an environment where the temperature is very low (for example, -40°C, the mobile DVR will NOT turn on immediately.)

4. Vehicle Connection

The mobile DVR supports input power voltage between 9 VDC ~ 36 VDC. You can install the mobile DVR in all kinds of vehicles support the above power voltage. The diagrams below are examples to illustrate the connection inside car / truck with 12 VDC / 24 VDC.

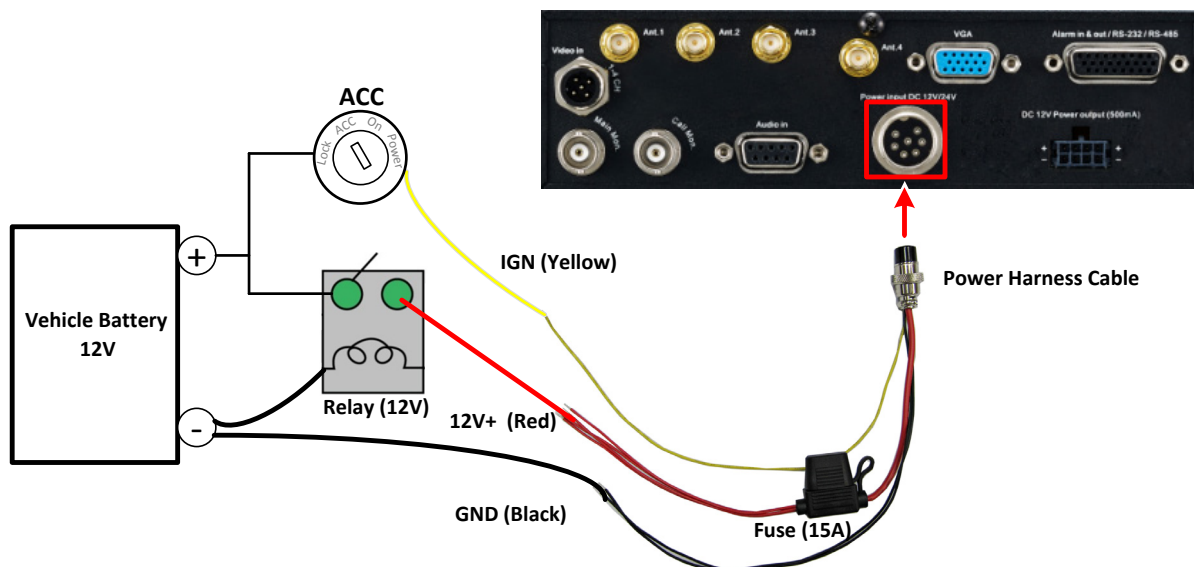
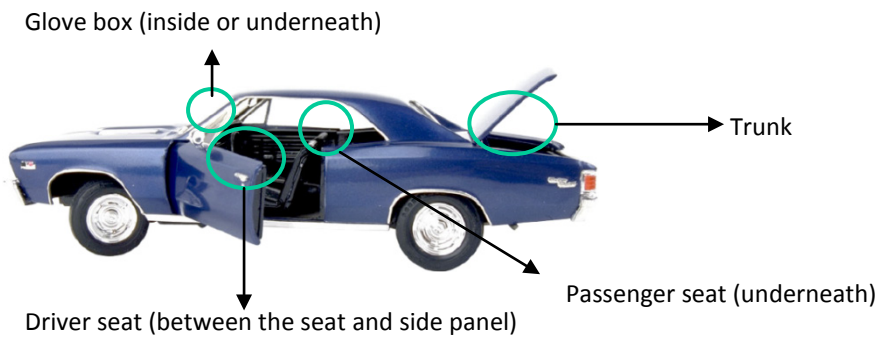
4.1 Connecting to a Truck with 24 VDC



Note:

1. If the car is without an ignition key, please connect the IGN (yellow) wire directly or via a switch to the vehicle battery.
2. It is suggested to use a relay in the installation. Otherwise, the mobile DVR will always draw the power from the vehicle battery.

4.2 Connecting to a Car with 12 VDC




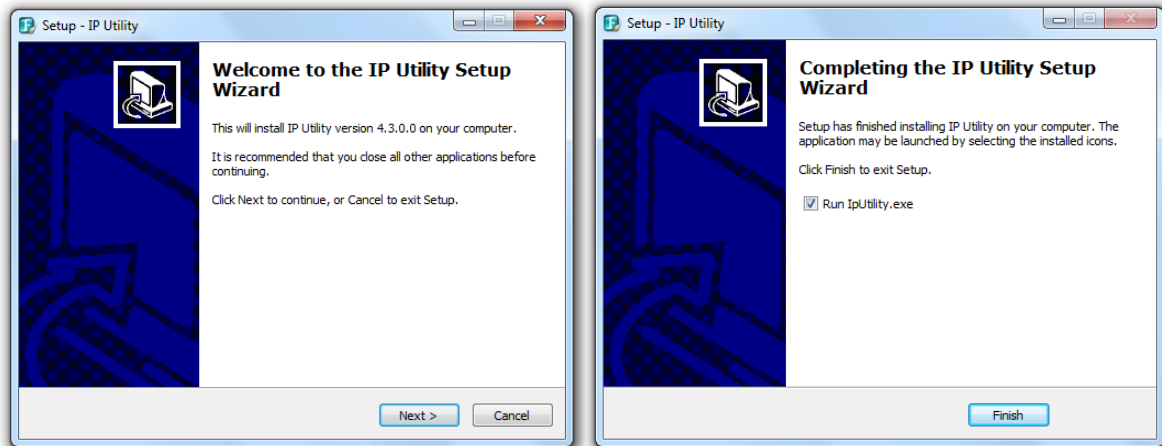
Note:

1. If the car is without an ignition key, please connect the IGN (yellow) wire directly or via a switch to the vehicle battery.
2. It is suggested to use a relay in the installation. Otherwise, the mobile DVR will always draw the power from the vehicle battery.

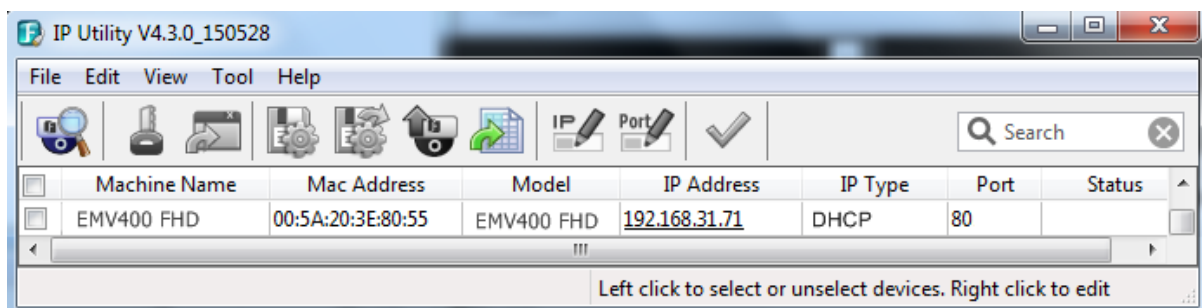
5. Accessing the Mobile DVR

You can look up the IP address and access the Web interface of the DVR using the **IP Utility (IPU)** program, which is included in the software CD. The IP Utility can also be downloaded from EverFocus' Website: http://www.everfocus.com/HQ/Support/DownloadCenter_p1.aspx. Please connect the DVR on the same LAN of your computer.


1. Save **IP Utility Setup.exe**  in your computer. Double click the .exe file and follow the on-screen instructions to install the IP Utility.

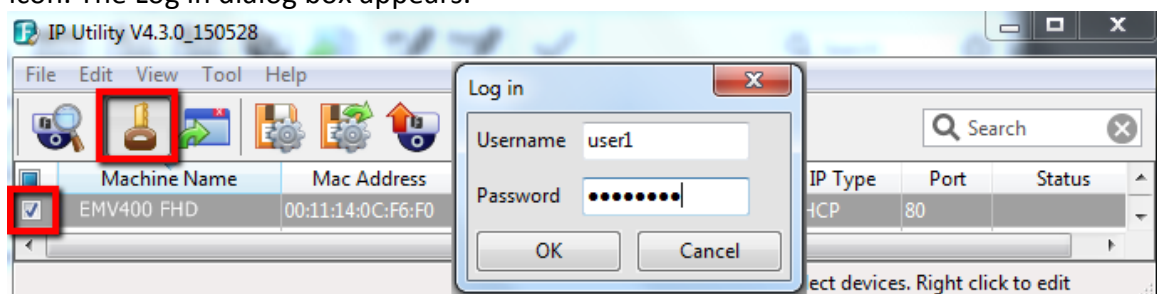


2. Click the **Finish** button, the IP Utility will be automatically launched to search the IP devices connected on the same LAN.



3. To optionally configure the Machine Name, IP Address, IP Type or Port Number using the IPU:

- a. Log in the mobile DVR by checking the desired model and then click the **Log in**  icon. The Log in dialog box appears.




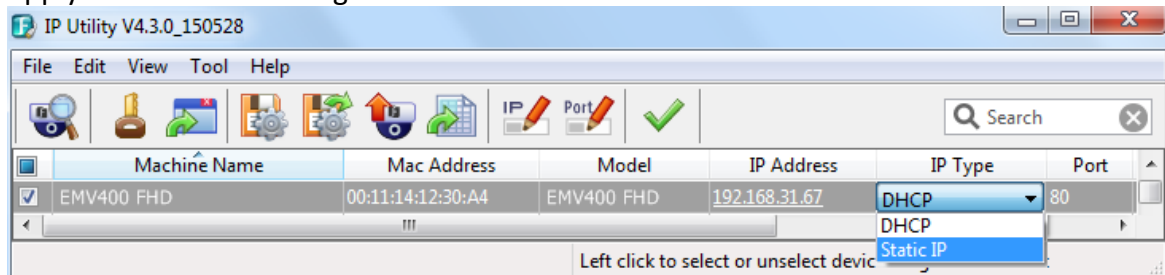
- b. Type the Username and Password. Click the **OK** button, the status of the selected camera will display **Login**.

	Machine Name	Mac Address	Model	IP Address	IP Type	Port	Status
<input checked="" type="checkbox"/>	EMV400 FHD	00:11:14:12:30:A4	EMV400 FHD	192.168.31.67	DHCP	80	Login

Note:

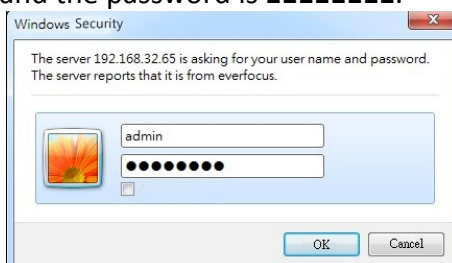
1. The default user ID is **admin** and the default password is **11111111**.
2. If you select more than one mobile DVRs that have the same user ID / password, you will be able to log in several mobile DVRs at once.

- c. Right click the column to configure the setting. Click **Apply Changes**  button to apply and save the settings.

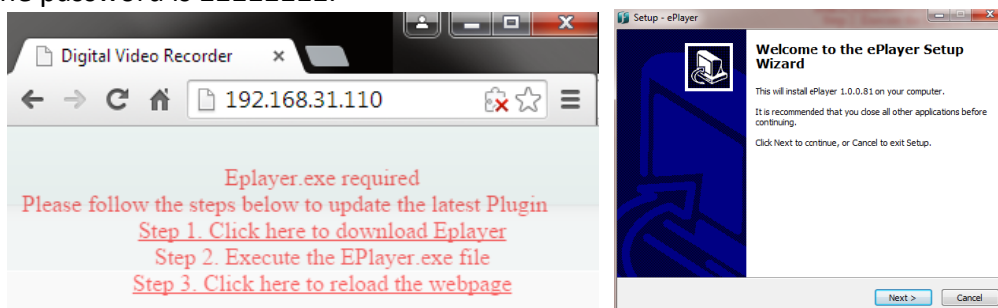


Note: Most networks uses DHCP to assign IP address, if you are unsure of your network settings, please consult your network administrators for configuration details.

4. To access the Live View window, double click the IP address of the desired device, the login window pops up. Type the user ID and password to log in. By default, the user ID is **admin** and the password is **11111111**.



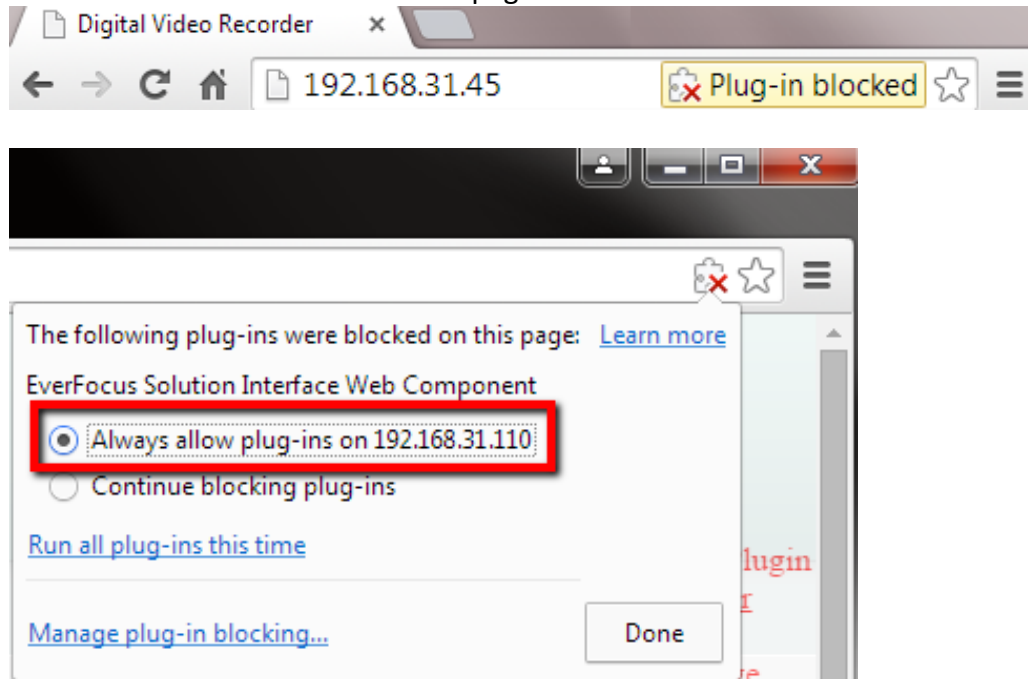
5. If you log in for the first time, follow the instruction steps on the interface to update the latest Plugin version (ePlayer). After reloading the webpage, the login window pops up again. Type the user ID and password to log in again. By default, the user ID is **admin** and the password is **11111111**.



Note for the first time login:

The “Download ePlayer Instruction” page will only be prompted for the first time login in order to update the system to the latest plugin version.

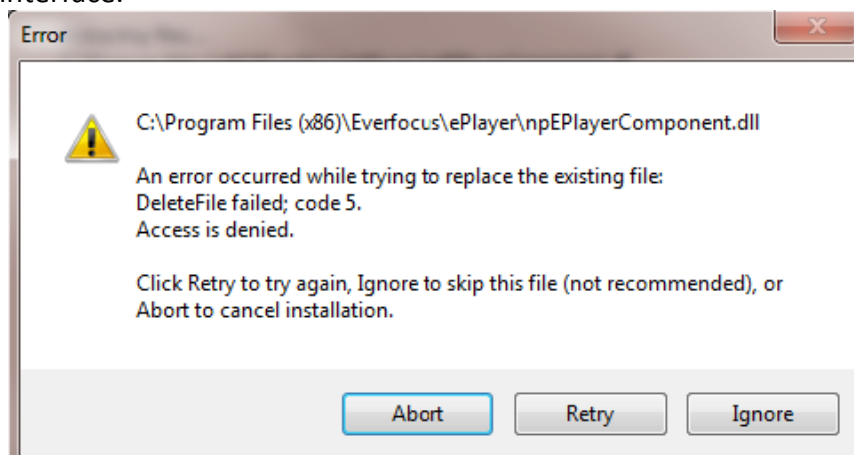
When the Plug-in blocked appears on the browser, select **Always allow plug-ins on xxx**, click **Done** and then reload the webpage.

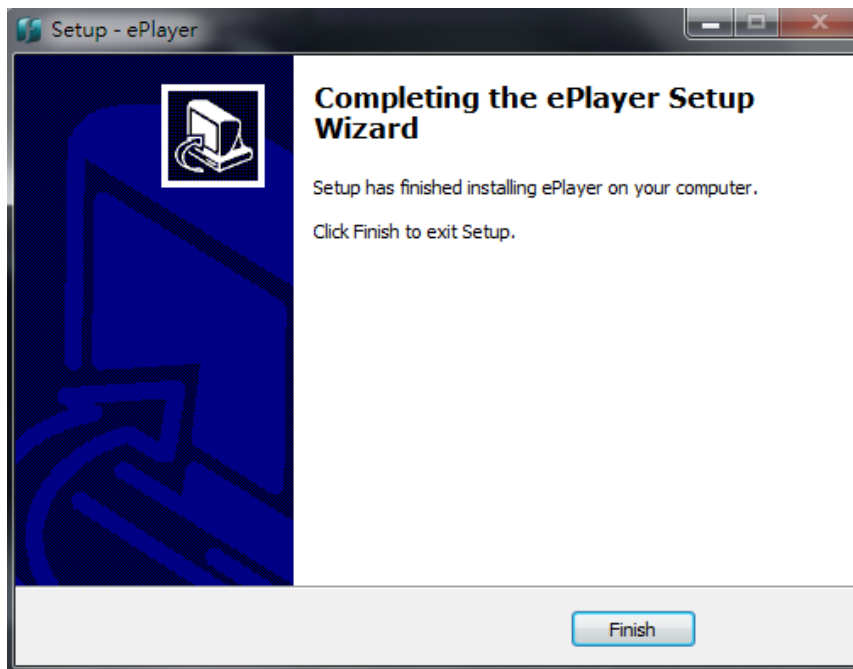


6. Now you will be able to see the remote live page.

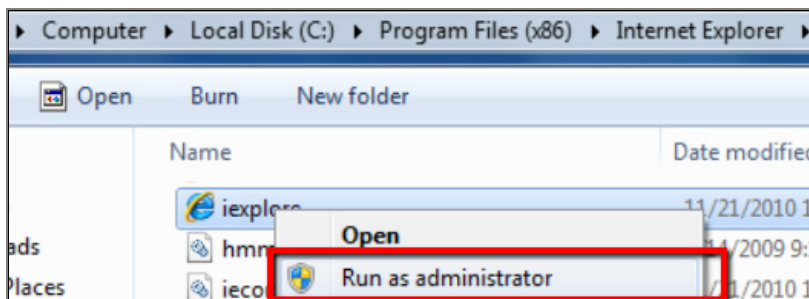
If you encounter the following problem or still can't access the remote Web interface, please see below:

- ◆ If the **Error** window appears, please be sure to **close ALL the Web browser windows first** and then click **Retry**. When the **Completing the ePlayer Setup Wizard** window shows up, click **Finish**. Then, you can open a new browser again to access the DVR's remote Web interface.



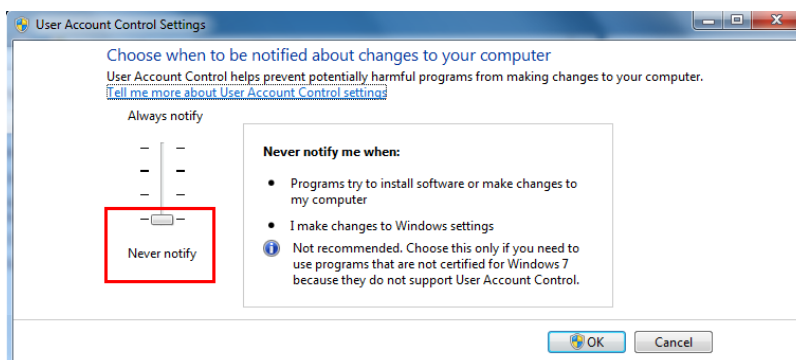


- ◆ If your PC or laptop is running with Windows, it's required to run the browser as administrator when first entering the remote web page of the device. Go to **C:\Program Files (x86)\Internet Explorer**, right-click the browser and then click **Run as administrator**.



- ◆ You may need to turn off the firewall and turn **User Account Control** off if you still can't see the Remote Live View.

To turn **User Account Control** off, on the computer, click **Start > Control Panel > System and Security > Action Center** (click Change User Account Control Settings), the **User Account Control Settings** window appears. Adjust the slide bar to **Never Notify** and then click **OK**. Restart your computer if requested.



EverFocus Electronics Corp.

EverFocus Taiwan:

12F-1, No.79, Sec. 1, Shin-Tai Wu Road,
Hsi-Chih, New Taipei City, Taiwan
TEL: +886 2 2698 2334
FAX: +886 2 2698 3943
www.everfocus.com.tw
marketing@everfocus.com.tw

EverFocus China - Beijing:

Room 609, Technology Trade Building,
Shangdi Information Industry Base,
Haidian District, Beijing 100085, China
TEL: +86 10 6297 3336~39
FAX: +86 10 6297 1423
www.everfocus.com.cn
marketing@everfocus.com.cn

EverFocus USA - California:

1801 Highland Avenue, Unit A, Duarte, CA 91010, USA
TEL: +1 626 844 8888
FAX: +1 626 844 8838
www.everfocus.com
sales@everfocus.com

EverFocus Europe - Germany:

Albert-Einstein-Strasse 1, D-46446
Emmerich, Germany
TEL: +49 2822 93940
FAX: +49 2822 939495
www.everfocus.de
sales@everfocus.de

EverFocus China - Shenzhen:

3F, Building 7, Longcheng Industrial Park, No.440,
Longguan Road, Dalang Street, Longhua, Shenzhen,
Guangdong, China
TEL: +86 755 2765 1313
FAX: +86 755 2765 0337
www.everfocus.com.cn
marketing@everfocus.com.cn

EverFocus Japan:

3F, Kuramochi, Building II, 2-2-3
Koto-Bashi, Sumida-Ku, Tokyo, 130-0022, Japan
TEL: +81 3 5625 8188
FAX: +81 3 5625 8189
www.everfocus.co.jp
info@everfocus.co.jp



Your EverFocus product is designed and manufactured with high quality materials and components which can be recycled and reused.
This symbol means that electrical and electronic equipment, at their end-of-life, should be disposed of separately from your household waste.
Please, dispose of this equipment at your local community waste collection/recycling centre.
In the European Union there are separate collection systems for used electrical and electronic product.
Please, help us to conserve the environment we live in!

Ihr EverFocus Produkt wurde entwickelt und hergestellt mit qualitativ hochwertigen Materialien und Komponenten, die recycelt und wieder verwendet werden können.
Dieses Symbol bedeutet, dass elektrische und elektronische Geräte am Ende ihrer Nutzungsdauer vom Hausmüll getrennt entsorgt werden sollen.
Bitte entsorgen Sie dieses Gerät bei Ihrer örtlichen kommunalen Sammelstelle oder im Recycling Centre.
Helfen Sie uns bitte, die Umwelt zu erhalten, in der wir leben!



EverFocus

PN: 4605EMV0402019B